



**For more information**

Contact: Nicole Orlando, Marketing and Communications Manager  
920-412-8133 (mobile) | 314-615-5277 (office)  
norlando@laumeier.org

***NEWLY COMMISSIONED PROJECT FROM ST. LOUIS ARTIST BRINGS  
AUGMENTED REALITY TO LAUMEIER SCULPTURE PARK***

**At a Glance**

**WHAT:** *Van McElwee: Time Fork*, a new project made using Augmented and Virtual Reality technology that explores a new dimension at Laumeier via a free, interactive app. Using a phone or tablet, visitors can navigate the natural, physical space of the Park while simultaneously experiencing a digital world of the artist’s imagination. *Time Fork* is one component of Laumeier’s thematic exploration of Art & Global Change, which runs through the spring of 2021.

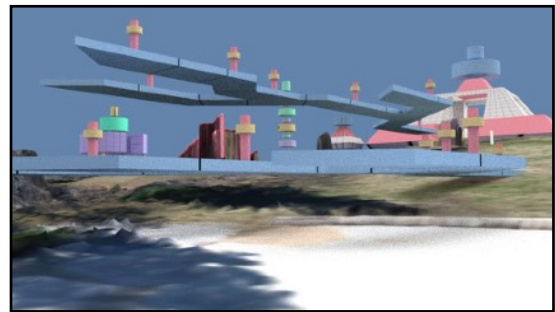


Image: *Van McElwee: Time Fork*, 2020. Digital sketch for AR/VR application. Courtesy the artist, St. Louis.

**WHO:** Local multi-media artist Van McElwee, whose portfolio of media art includes video, Augmented Reality, installations and web projects. McElwee is also a Professor of Electronic and Photographic Media at Webster University in St. Louis, Missouri and has received numerous grants and awards.

**WHEN:** The project will be on view from October 11, 2020 – May 9, 2021. Laumeier Sculpture Park is free and open daily from 8 a.m. until 30 minutes past sunset.

**WHERE:** Laumeier Sculpture Park, 12580 Rott Road, St. Louis, MO 63127. The exhibition is explored throughout Laumeier’s Outdoor Galleries.

**WHY:** McElwee’s highly innovative and interactive artwork is the first project in Laumeier’s history to use Augmented and Virtual Reality, allowing visitors to experience brand new digital adventures within the Park’s natural landscape. *Time Fork* is an intersection of art, nature and technology that provides a remarkable setting for pondering the essence of choices, time and reality itself.

***Detailed release follows***



**For more information**

Contact: Nicole Orlando, Marketing and Communications Manager  
920-412-8133 (mobile) / 314-615-5277 (office)

[norlando@laumeier.org](mailto:norlando@laumeier.org)

**LAUMEIER SCULPTURE PARK PRESENTS VAN MCELWEE: TIME  
FORK, OCTOBER 11, 2020 - May 9, 2021**

**St. Louis, MO** – Laumeier Sculpture Park is proud to present the newly commissioned project *Van McElwee: Time Fork*. McElwee, a local St. Louis multi-media artist, will create an Augmented Reality environment offering visitors an alternative Laumeier experience. Created from a topographical drone mapping of Laumeier, imagined structures will be placed virtually within the physical landscape at Laumeier and accessed through a free mobile app. McElwee’s interactive application will allow visitors to use a phone or tablet to navigate the physical space of the Park while simultaneously exploring a virtual world.

The project, organized as a walking tour of the Park viewed through the lens of technology, entertains a playful fiction: roughly a thousand years ago, time branched to create a parallel world. In McElwee’s installation, he uses Augmented Reality to reveal features of a settlement that exists in that parallel or even future world, overlapping what we know as Laumeier Sculpture Park. McElwee explains: “We see structures that could be under construction or in ruins; they could have a ritual, municipal or even an industrial function. Using phones or tablets as windows, viewers can fully explore these mysteries, inside and out, a tool that is at least conceptually, archeological and anthropological.”

Laumeier’s Curator Dana Turkovic states: “Laumeier is very excited to present this groundbreaking interactive project that allows visitors to take a solo journey using their own devices to explore a parallel world. Built to excite curiosity and wonder, McElwee’s project takes the idea of touring the Park to another conceptual level. *Time Fork* is an online gateway to discovery, creating an experience that is both virtual and real.”

*Time Fork* is one component of Laumeier’s thematic exploration of Art & Global Change that runs through 2021. Culminating in a group exhibition in Spring 2021 titled *The Future is Present: Art and Global Change*, which *Time Fork* will be a part of, the theme seeks to examine the global impacts of climatic and environment changes through the lens of contemporary art. Therefore, Laumeier hopes visitors will see McElwee’s project as a portal for both contemplating our current conditions and pondering our choices related to the environment, our communities and time itself.

**About the Artist**

Van McElwee received his MFA in Multimedia in 1978 from Washington University School of Art and his BFA in Printmaking in 1973 from the Memphis College of Art. Selected installations and one-person shows include: Anthology Film Archives, New York; ARTpool in Budapest; The Shanghai Duolun Museum of Art, China; Galerie Trabant, Austria; Rencontres Video Art Plastique in France; Berkeley Museum of Art Pacific



Film Archive, California; The Marsh Gallery at the University of Richmond, Virginia; Medienwerkstatt in Vienna and Ohio University Gallery of Art. Selected group shows and festivals include: The National Gallery of Art, Washington, DC; Paula Cooper Gallery New York; The Long Beach Museum of Art; Ars Electronica, ZKM, Siggraph; Camden Arts Centre, London; Wexner Center for the Arts; Milwaukee Art Museum; Japan Media Arts Festival, Tokyo; ASIFA Austria, Museum Quartier, Vienna; Worldwide Video Festival at the Stedelijk Museum; The Renaissance Society at the University of Chicago; Art in General, New York; Digital Dance Festival, Seoul, South Korea and Palais des Beaux Arts, Lille, France. His grants and awards include: A John Simon Guggenheim Memorial Foundation Fellowship; St. Louis Regional Arts Commission Artist Fellowship; The American Film Institute Independent Filmmaker Award and the National Endowment for the Arts Independent Production Fund. McElwee's work is represented by Bruno David Gallery, St. Louis, The Kitchen in New York, Inter Media Art Institute in Germany and Galerie Trabant, Austria. He is Professor of Electronic and Photographic Media at Webster University, St. Louis, Missouri.

### **Public Programs**

Multiple public programs will be presented in conjunction with this project. Webster University has generously donated nine iPads to Laumeier that will be available for check out during these events. Visit [laumeier.org](http://laumeier.org) for the most up-to-date information on programming.

**Sunday, October 11 / Noon – 3 p.m. / Tours at 12:30 p.m. and 2 p.m.**

**Laumeier Sculpture Park, Outdoor Galleries / Free**

EXHIBITION OPENING of *Van McElwee: Time Fork*

Visitors will be able to check out an iPad in the Emerson Visitor Center or download the *Time Fork* app on their own mobile devices and take a personal tour with the artist. Tour is approximately one hour. Limit 9 persons per tour. Reservations required.

**Saturday, October 24 / 10 a.m. / Free**

COFFEE & CONVERSATION: *Van McElwee*

Attendees will be able to check out an iPad in the Emerson Visitor Center or download the *Time Fork* app on their own mobile devices and take a personal tour with the artist. Tour is approximately one hour. Limit 9 persons. Reservations required.

**Saturday, November 21 / 10 a.m. / Free**

COFFEE & CONVERSATION: *Van McElwee*

Attendees will be able to check out an iPad in the Emerson Visitor Center or download the *Time Fork* app on their own mobile devices and take a personal tour with the artist. Tour is approximately one hour. Limit 9 persons. Reservations required.

### **About Laumeier Sculpture Park**

Founded in 1976, Laumeier Sculpture Park is one of the first and largest sculpture parks in the country. Laumeier presents more than 70 works of large-scale outdoor sculpture throughout its 105 acre campus, and serves 300,000 visitors of all ages each year, with a world-class art collection, indoor and outdoor temporary exhibitions, education programs, and public events. Laumeier is an internationally recognized museum, accredited by the American Alliance of Museums. The 501(c)3 nonprofit organization operates in partnership with St. Louis County Parks.

# LAUMEIER

Laumeier Sculpture Park's ongoing operations and programs are generously supported by St. Louis County Parks; Regional Arts Commission; Missouri Arts Council; Arts and Education Council; among other corporations, foundations, individual donors and members.

Additional funding related to COVID-19 relief has been provided by the U.S. Small Business Administration, the National Endowment for the Arts and the Windgate Foundation.

2020 Exhibitions are supported by Ellen and Durb Curlee, Alison and John Ferring, Jan and Ronnie Greenberg, Nancy and Ken Kranzberg, Joan and Mitchell Markow and Two Sister's Foundation, Emily Rauh Pulitzer, Mary Ann and Andy Srenco.

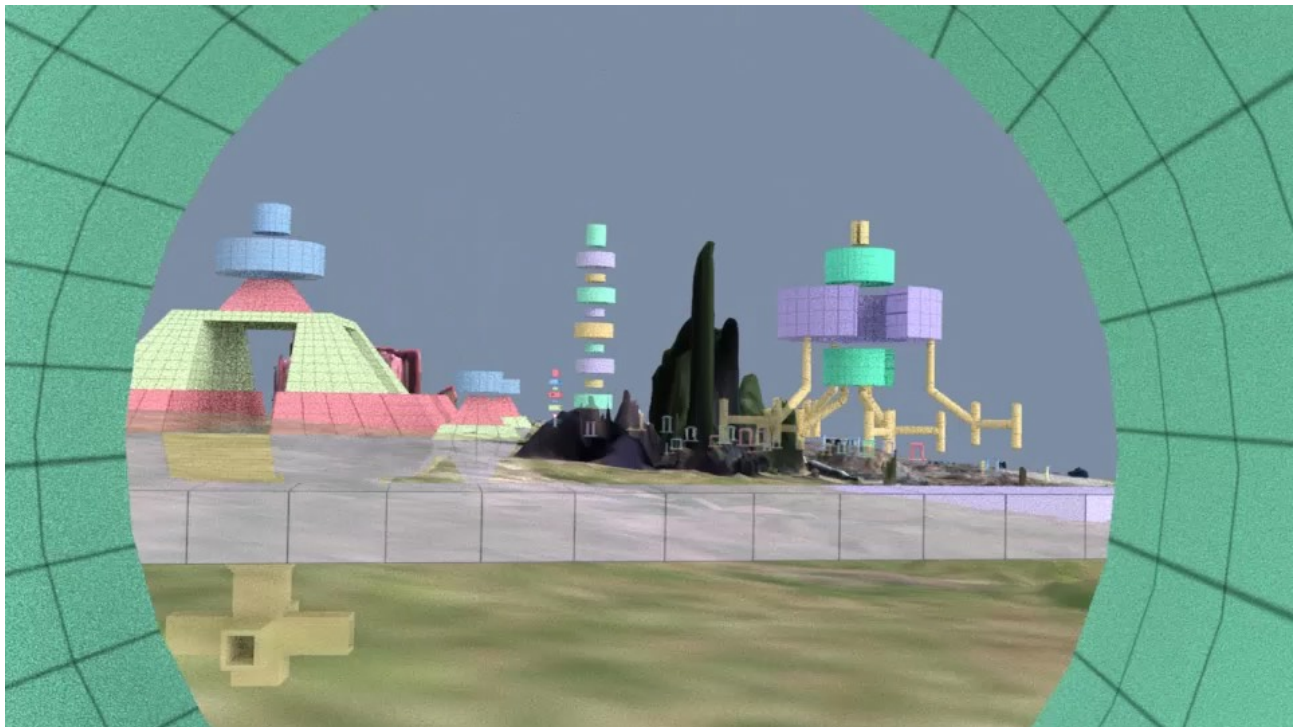
*Van McElwee: Time Fork* is supported by the Windgate Foundation; the Whitaker Foundation; and Mid-America Arts Alliance, the National Endowment for the Arts, and the state arts agencies of Arkansas, Kansas, Missouri, Nebraska, Oklahoma, and Texas. Van McElwee is Laumeier's 2020 Kranzberg Artist. This fund, generously provided by Ken and Nancy Kranzberg, supports the presentation of new work by one St. Louis area artist per year.

Special thanks to Casper McElwee and Rampant Interactive.

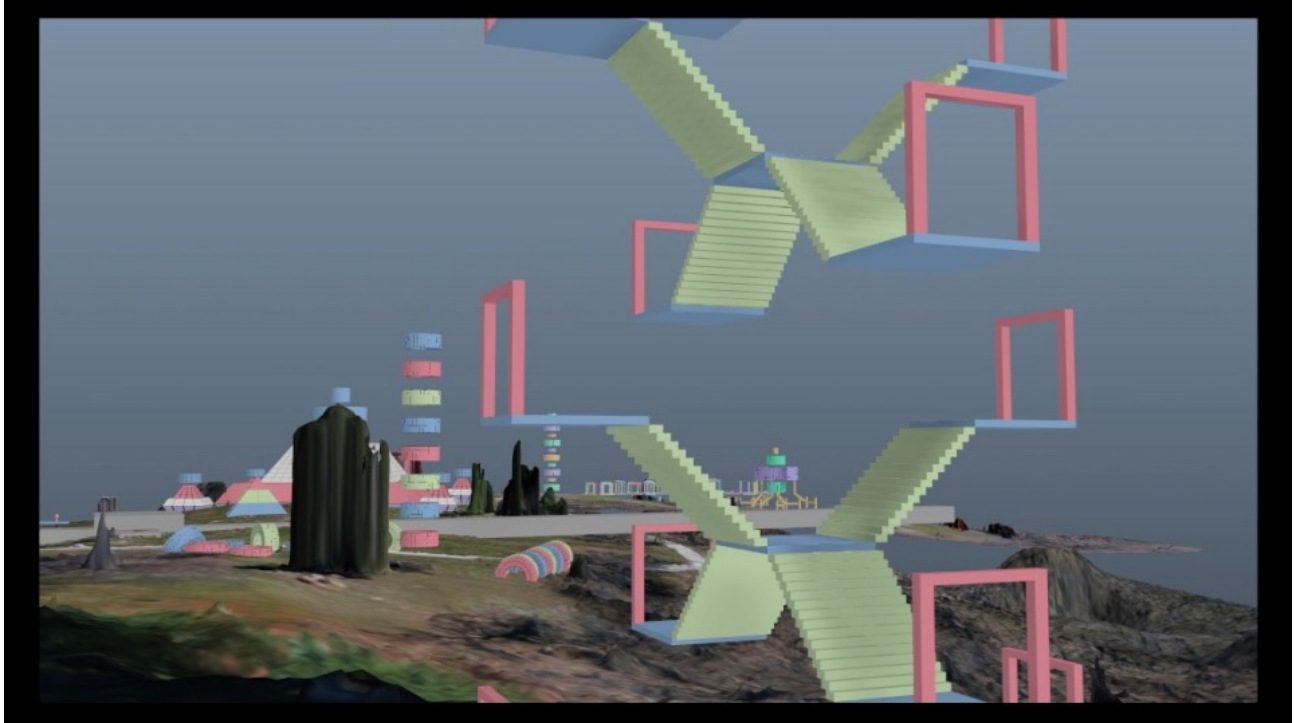
For more about Laumeier Sculpture Park, please visit [www.laumeier.org](http://www.laumeier.org).

## **Exhibition Images**

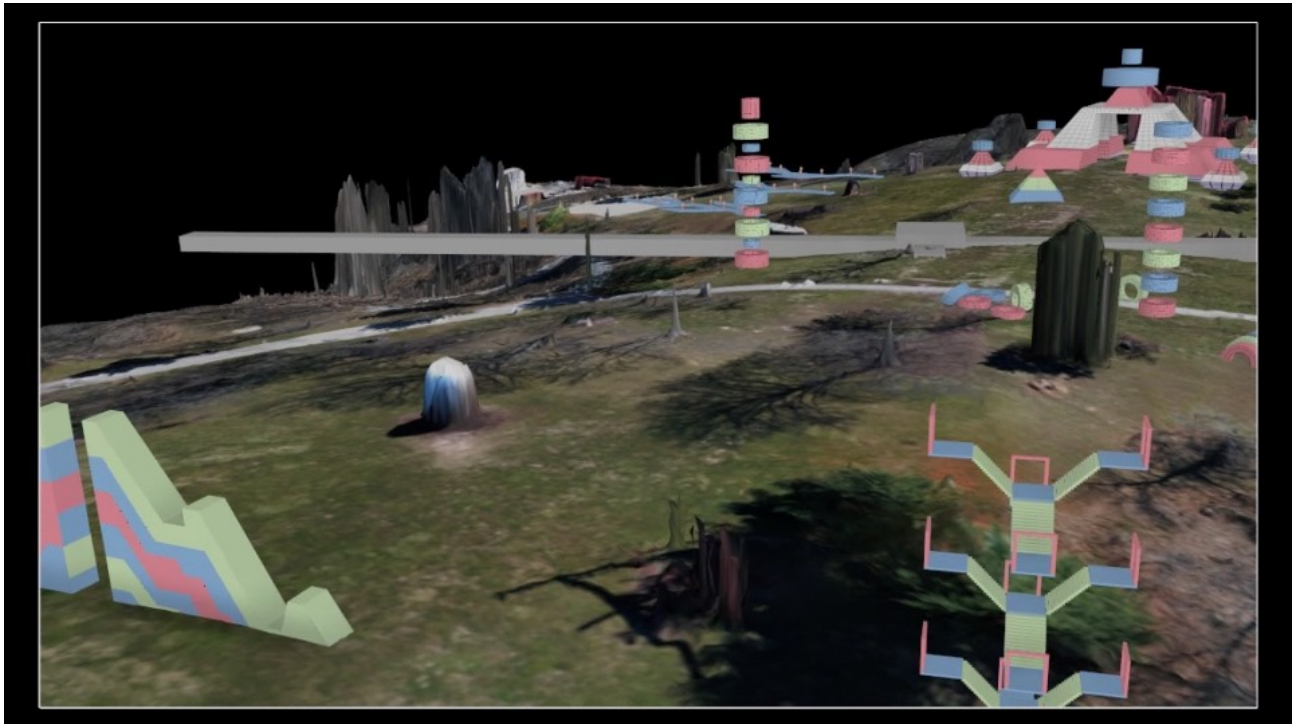
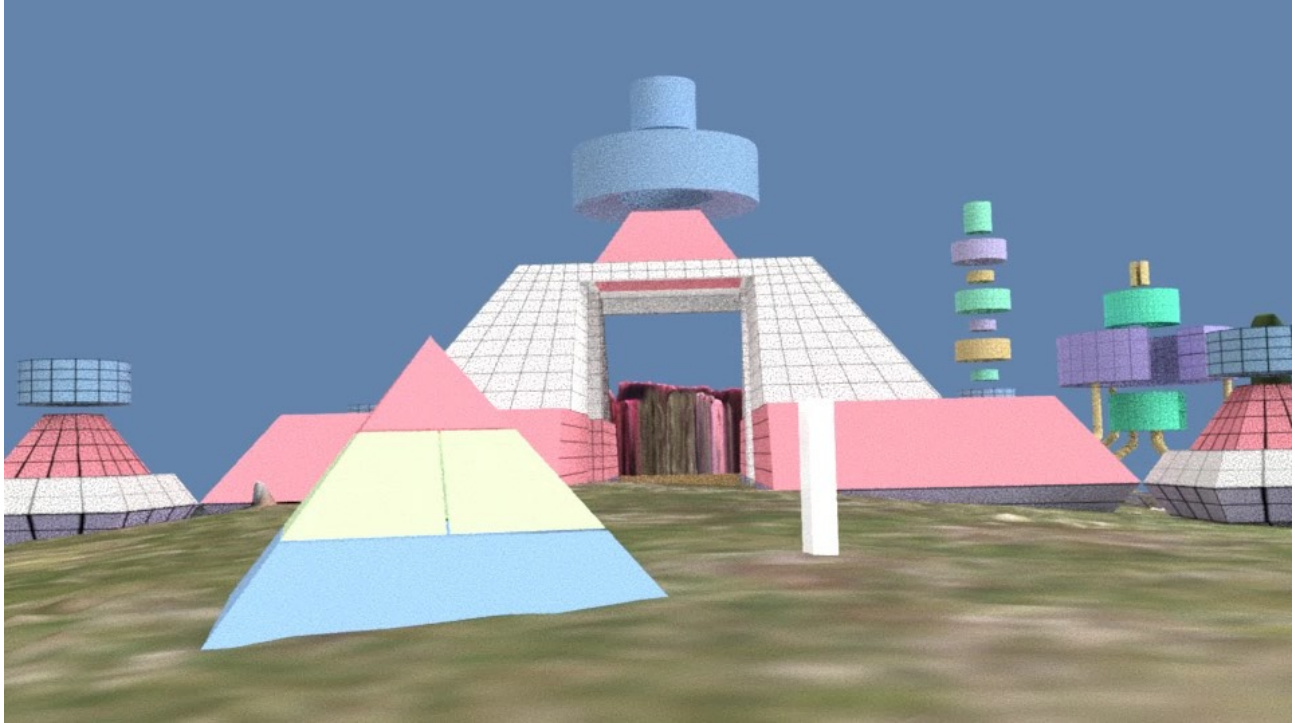
*Van McElwee: Time Fork*, 2020. Digital sketches for AR/VR application. Courtesy the artist, St. Louis.



# LAUMEIER



# LAUMEIER



###