



# LAUME/ER

THE YEAR IN REVIEW / A LOOK BACK AT **2023**

# LAUMEIER SCULPTURE PARK

is one of the first and largest sculpture parks in the country, and considered to be one of the top ten in the world. Laumeier is an internationally recognized, nonprofit arts organization that is free and open daily. Dedicated to creativity, community connections, and the restorative benefits of art and nature, we serve more than 350,000 visitors of all ages each year with art exhibitions, education programs, and public events. Our 105-acre Park located in the heart of St. Louis County is home to more than 70 large-scale outdoor sculptures interwoven among woodlands and trails, enticing visitors with an immersive blend of art and nature.

# 2023

## A MESSAGE FROM THE EXECUTIVE DIRECTOR



2023 brought some truly exciting projects and developments and many things of which to be proud.

This year's exhibitions stand out as one highlight. The presentations in the Whitaker Foundation Gallery of Yayoi Kusama in the spring and Vaughn Davis Jr. in the fall are a dramatic study in contrasts: Kusama is a 94-year-old, globally famous Japanese artist while Davis is a 28-year-old local rising star, still in the early stages of his career. To me, this range encapsulates what Laumeier strives for. We are very purposeful in our curation of local, national, and international artists of different ages and at varying stages of their careers; young and old, emerging and established, experimental and recognizable. What ties them together is that their ideas and work always spark imagination and intrigue.

This year we launched an inspired partnership with the brand new 21c Museum Hotel St. Louis. As a supporter of our Visiting Artist in Residence program, they will not only provide our visiting artists with a fabulous place to stay, but they will also host talks and programs by our Visiting Artists at the hotel. Visiting Artists Lenka Clayton and Phillip Andrew Lewis were among the very first guests to stay at the hotel when it opened. Additionally, Laumeier and Via Partnership helped commission a striking sculpture by St. Louis artist Chandler Ahrens entitled *View Finder* for 21c's outdoor courtyard. We are excited not only about this partnership, but for the chance to contribute to

the artistic landscape of St. Louis off of our grounds.

Last but certainly not least, one of the biggest accomplishments of the year was to tackle the most extensive conservation ever embarked upon for Alexander Liberman's *The Way*. This towering red sculpture is not only an unmissable centerpiece of Laumeier's collection, it serves as an icon for the entire St. Louis region. After 43 years of being outdoors, it needed an array of restorative work, and we were able to tackle this major project with the support of multiple national and local partners and funders.

This year also brought my five-year anniversary at Laumeier, and such moments inevitably inspire reflection. To be honest, the past five years have been a little bit of a rollercoaster, chock full of learning curves, wildly unpredictable events, rewarding triumphs, promising new developments, advances and setbacks alike. Most of all, the past five years have been incredibly rewarding. While I may be in a bit of a retrospective mood, I—and the rest of the leadership and staff at Laumeier—are always looking forward. Laumeier's 50th anniversary is coming up in 2026. I won't reveal any details just yet, I will just tease that we are planning many special ways to celebrate this remarkable landmark. We will start sharing some news about that in the upcoming year.

I hope to see you in the Park soon,

**READ MORE REFLECTIONS FROM LAUREN ON PAGE TWO.**

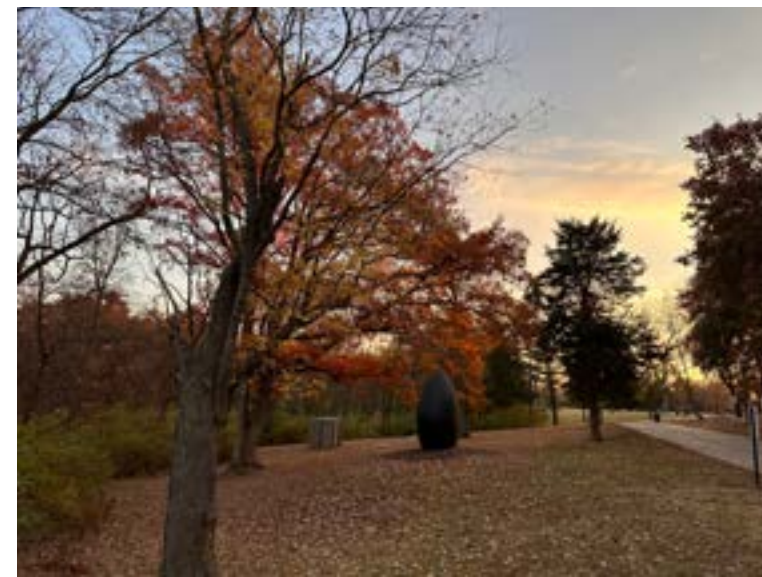
### BOARD OF DIRECTORS

Travis Sheridan / *President*  
Stephanie Copp Martinez / *Treasurer*  
Kerrin Kowach / *Secretary*

Claude E. Bond IV  
Matthew Harvey  
Amy Hautt  
Stephen Hubbard  
Kenneth Kranzberg  
Nancy Kranzberg  
Kelly Malone  
Kelley McCarthy  
Meridith McKinley  
Megan Ridgeway  
Jeff Ryan  
David Schlafly  
Mary Ann Srenco  
Timothy Trotter  
Kelley Van Dyck Murphy  
Susan Warshaw  
Stas Wolak  
Gary Wolff  
Carlos Zamora

### EX-OFFICIO BOARD MEMBERS

Brian Schaffer  
John Dohr  
Patricia Zahn  
Guinn Hinman  
Barbara Eagleton, Emerita  
Barbara Gervais, Emerita  
Lawrence Mooney, Emeritus  
Kenneth Steinback, Emeritus  
Sissy Thomas, Emerita  
John Wuest, Emeritus



### STAFF

Emily Daugherty  
*Visitor Experience Team*

Sara Eaton  
*Private Events Manager*

Patrick Ganley  
*Maintenance Supervisor*

Sarah Harford  
*Studio Practice Coordinator*

Vicki Kahn  
*Development Associate*

Scott Layne  
*Director of Special Events*

Josie Lozano  
*Special Events Coordinator*

Amber Majors  
*Visitor Experience Team*

Kate Martin  
*Marketing & Communications Manager*

Ryan McCartney  
*Chief Preparator*

Diana McDonough  
*Administration Manager*

Karen Mullen  
*Curator of Education*

Ross Munroe  
*Maintenance*

Julia Norton  
*Administrative & Volunteer Coordinator*

Kate Ott  
*Collections Maintenance Assistant*

Jillian Patton  
*Development Director*

Mike Porter  
*Maintenance Lead*

Jose Ramos  
*Maintenance*

Lauren Ross  
*Executive Director*

Ryan Shoults  
*Maintenance*

Darren Snead  
*Visitor Experience Team*

Dennis Stegmann  
*Visitor Experience Team*

Fabiola Torres Guerrero  
*Education Coordinator*

Dana Turkovic  
*Curator*

Elsie Tuttle  
*Learning & Engagement Specialist*

Stacy West  
*Deputy Director*

We extend a special thank you to our 2023 Art Table Fellow Yunyao Que.



# FIVE YEARS: LOOKING BACK (AND FORWARD)

AUGUST 2023 marked Lauren Ross's 5-year anniversary as executive director. To reflect back (and forward!), she chatted with Kate Martin, Laumeier's new marketing + communications manager.

## **How has the Park changed since you've started?**

I hate to begin on this note, but it's nearly impossible to discuss change over the past five years without addressing the pandemic and the havoc it wreaked. Between 2020 and 2022, change felt near-constant. It tested Laumeier's adaptability and necessitated shifts, some of which are here to stay. Ultimately some of those changes led to fresher approaches and improvements.

Another major change has been the introduction of some new programs which we are tremendously excited about, including *Opening Minds Through Art* (OMA) and *STEAM at Laumeier*.

Also, there have been some internal changes that may not be visible to all who come, but they are crucial to the health of the organization, nonetheless. These include salary increases, additional benefits, and more flexible schedules for staff. And deeper work on how we can make the Park a space where all visitors feel they belong.

## **What would you like to see happen at the Park in the next five years?**

I would like to see the next few years bring greater stability. The pandemic's impacts combined with dramatic reallocations in the philanthropic landscape have resulted in major ground shifts, especially in relation to funding. We need a more solid financial base so we can continue to resiliently weather the unexpected.

## **What have you learned?**

It's hard to give a brief answer to this because, honestly, I learn something every day! Certainly, one of my major takeaways from the past five years is that the community cares deeply about Laumeier, and that fuels incredible potential and possibility.

## **What are your reflections on the St. Louis community?**

St. Louisans appreciate the unique and positive aspects of life here but at the same time, want to see more for the community – more functionality, more equity, more understanding, more unity. And some of these things are slow to come. Also, St. Louisans LOVE a festival!

## **What do you wish everyone knew about the Park?**

I wish everyone knew about the full scope of our offerings. I meet many people who know and love a single program or event and are genuinely surprised when they learn how many other possibilities exist. We strive to not only offer something for everyone, we want to offer many options for everyone!



# LAUMEIER IS MORE THAN MEETS THE EYE

## **We're a Nonprofit, and a Park**

Laumeier is a public/private partnership, operated by St. Louis County Parks and the nonprofit arm of the organization. People ask, "Doesn't my tax money already pay for the park?" or occasionally, "Wait, is my tax money paying for those crazy sculptures!?"

We would like to clear up any confusion. In 2023, it cost \$2.6 million to operate the Park. Of that total cost, St. Louis County Parks covers just under 20% and the nonprofit is responsible for just over 80%. Of the portion that the nonprofit must raise, less than 5% comes through public sources. In other words, the nonprofit must raise over \$2 million each year from individuals, foundations, corporations, and other private sources.

## **And an Art Museum, Wellness Center, and Learning Hub**

Laumeier is both a park and an art museum. Parks and arts/cultural organizations provide tremendous value and benefit to their communities in a myriad of ways.

Parks encourage healthy lifestyles, increase community wellbeing, and promote communal experiences between citizens. They also help the environment: their trees remove thousands of tons of toxins from the air, filter rain and absorb storm water runoff, and help cool surrounding temperature.

Experiencing the arts fuels inspiration, creativity, empathy and cultural understanding for people of all ages. Arts education also brings many benefits to K-12 school kids, helping kids engage with school and reduce stress; develop social-emotional and interpersonal skills; enrich their experiences; handle constructive criticism; bolster academic achievement; and improve focus.

Sources:  
"Why City Parks Matter," City Parks Alliance, 2023.  
"The Benefits of Arts Education for K-12 Students." US News & World Report, August 2022  
"The Economic Impact of Local Parks." National Recreation and Parks Association, 2019  
Arts & Economic Prosperity 6 (AEP6), Americans for the Arts, 2023

## **An Economy Booster, Too**

The arts and parks generate serious economic prosperity.

A 2019 report showed that local park and recreation agencies across the country generated nearly \$218 billion in economic activity and their operations and capital spending supported almost 1.3 million jobs. In Missouri, that was \$3.6 billion in economic activity and over 23,000 jobs.

In 2023, Americans for the Arts published AEP6, a national study of the economic and social impact of the arts based on 2022 data. In Missouri, the arts and culture industry generated \$1.725 billion in economic activity, with \$868.7 million of that activity in the Greater St. Louis area alone. These numbers encompass spending by arts and culture organizations as well as event-related expenditures by their audiences.

Laumeier is proud to be one of the many organizations helping to improve people's lives and buoy the local economy. And we are grateful to our donors, members, and supporters who make this work possible.





## DONORS (\$1,000+) / November 2022 - October 2023

### \$100,000+

Louetta Ann Buechler Estate  
Anonymous (1)

### \$50,000 - \$99,999

Nancy and Kenneth Kranzberg  
Regional Arts Commission of St. Louis  
Whitaker Charitable Foundation

### \$25,000 - \$49,999

Gateway Foundation  
Lighthouse for the Blind, St. Louis  
Missouri Arts Council  
National Endowment for the Arts  
PNC Arts Alive  
Windgate Foundation

### \$10,000 - \$24,999

Lesley Knowles\*  
The Saigh Foundation  
Mary Ann and Andy Srenco

### \$5,000 - \$9,999

Aronson Family Foundation  
Caleres  
City of Sunset Hills  
Jan and Ronald Greenberg  
Henry Moore Foundation

Kerrin and David Kowach  
Mary Kay and Kim Love  
Joan and Mitchell Markow,  
Two Sisters Foundation  
Emily Rauh Pulitzer  
The Trio Foundation of St. Louis

### \$2,500 - \$4,999

AmFund  
Anthony Bardol  
Barbara Bushman Goodman\*  
Christner Architects  
JiaMin and Michael Dierberg  
John Drew, The Daniel & Henry Co.  
Alison and John Ferring,  
The Ferring Family Foundation  
Matt Harvey  
Ranu and Steve Hubbard  
Kelly Malone  
Meridith McKinley and Jeffrey Winzerling  
PNC Bank  
Lauren Ross  
Jamie and Jeff Ryan  
Travis Sheridan  
Dawn Suggs  
Pam and Greg Trapp  
Elizabeth and Tim Trotter / TROCOFAB  
Susan and Henry Warshaw

### \$1,000 - \$2,499

Christopher Bauer  
David Bauer  
Blueprint4  
Sue and Mark Bronson  
Rachel and David Eidelman  
Roxanne Frank, Rotonda Foundation  
Amy Hauff and Jack Risley  
Cynthia and Venable Houts  
Christine Jacobs and Henry Webber  
Karen and Mont Levy  
Charles Miller  
Megan Ridgeway  
Julie and William Shearburn,  
William Shearburn Gallery  
Sissy and Ted Thomas  
Robin Weinberg and Scott Anderson

### In-Kind Support

21c Museum Hotel St. Louis  
Carboline  
Ironman Sound Industries  
Schlafly Beer  
St. Louis County Parks  
Traube Tent Company

\*Deceased



# WE OUR MEMBERS

## LAUMEIER MEMBERS SUPPORT THE PARK + ENJOY GREAT BENEFITS YEAR-ROUND

We want to extend a very special thanks to our Laumeier members for their support this year. Membership helps us to keep the Park thriving and engage our community through free and low-cost public programs – and members enjoy great perks for doing so!

In 2023, we were thrilled to offer our members first access to timed-entry tickets Yayoi Kusama's *Narcissus Garden*, the first large-scale public exhibition of Kusama's work in St. Louis. Members enjoyed dedicated viewing hours before the show opened to the public, as well as a breakfast reception complete with mimosas!

We welcomed members to the Park in April for a special family-friendly celebration that featured a spring planting activity, a members-only tour led by our Curator Dana Turkovic, and mingling with other members over bagels and donuts. And we kicked off our fall exhibition season with a special members preview and happy hour in the Aronson Fine Arts Center.

If you're not yet a member, we hope you'll consider joining in 2024! Personalize your membership based on what you love about Laumeier – benefits at different levels include FREE admissions to our most popular events, the *Annual Art Fair* and *Laumeier After Dark*, as well as discounts on summer camps, classes, workshops, and more.

Learn more and become a member at [laumeier.org/membership](https://laumeier.org/membership), or reach out to us any time at [members@laumeier.org](mailto:members@laumeier.org).



## VOLUNTEERS BY THE NUMBERS

The efforts of garden volunteers Bob Becker, Patricia Dietrich, Kay Faddis, David Hults, Joann Sind, Sue Stoddard and Linda Waugh combined for a total of 130 hours of service to Laumeier in 2023. The results of their work at the Kranzberg Education Lab terrace were admired by visitors throughout the summer.

Laumeier's dedicated Board of Directors contributed 150 hours of service and special event volunteers contributed 640 hours to Art Fair, *Discover Laumeier* and *Laumeier After Dark*.

## VOLUNTEER SPOTLIGHT

### BOB BECKER

Laumeier volunteer Bob Becker is a man of many talents! He is a retired Kirkwood High School chemistry teacher and inventor. At Laumeier, he serves as a garden volunteer, summer camp volunteer, and now an instructor for *STEAM into Laumeier*. If you've been to our gift store, Gracie's Shop, you've likely seen HyperTiles, a toy that promotes STEAM learning. They are Becker's invention! 100% of proceeds from HyperTiles support charities such as the St. Louis Area Foodbank and the Interamerican Association for Environmental Defense (AIDA). We thank Bob for his continued contributions to Laumeier!



# SCULPTURE CONSERVATION

## THE WAY

With its bright red limbs, dynamically stacked and balanced at a massive scale, *The Way* cannot be missed. This impressive towering construction was the first large-scale sculpture purchased for Laumeier's art collection. In 1980, Alexander Liberman assembled, completed, and unveiled the sculpture on the very spot where it still stands (at a weight of 55 tons, it's not easy to move!)

Over the following decades, it has become Laumeier's signature sculpture, a favorite of Park goers, and an icon for the entire region. Its image has been reproduced in countless places—from the cover of the telephone book to the region's official tourist brochures—in recognition of the wondrous experience visitors have when they encounter it.

Over forty years of constant exposure and rough visitor interaction (*AHEM!*) does take a physical toll. *The Way* has had minor treatments and was re-painted in 1996 and 2011, but the combination of faded and patchy paint, chipped concrete, and corroded metal indicated that it was time for its most thorough conservation ever.

In response, Laumeier launched a major, multi-phased plan to restore *The Way* to peak condition. The team overseeing the conservation initiative consists of Laumeier curatorial staff, the preferred conservator of the Alexander Liberman estate, and members of the Getty Conservation Institute of Los Angeles. Local contractors are performing the work.



### PHASE 1 - ASSESSMENT (2020-23) / COMPLETE

Over the last few years, the sculpture has been examined by engineers and professional art conservators. A laser scanner was used to create 3D images of the entire sculpture and its base, providing internal and external evaluations of structural and material condition. A small opening was cut into the sculpture to allow a camera's view into the interior.

### PHASE 2 - CONSERVATION / BEGAN FALL 2023

Phase two is a carefully choreographed execution of the needed repairs, including:

- Removing large areas of metal that are weak or compromised, replacing them with newly fabricated sections, and seamlessly integrating the new components into the rest of the sculpture.
- Inspecting and replacing connection points, anchors, and base plates as needed.
- Infilling cracks and chips in the sculpture's concrete slab foundation.
- Blasting away areas of the existing paint; priming, painting, and top coating the entire surface.
- Refreshing the landscaping surrounding the sculpture as needed after the work is complete.



### Thanks to Our Generous Donors

Restoration of *The Way* is made possible in part by the Louetta A. Buechler Trust; Gateway Foundation; The Gertrude and William A. Bernoudy Foundation; National Endowment for the Arts; the Mark Twain Laumeier Endowment Fund; Henry Moore Foundation; Ruth and Alvin Siteman, Mary Kay and Kim Love, Anthony Bardol, Jan and Ronald Greenberg, Charles Miller, Susan and Henry Warshaw, and many other generous individuals. In-kind support is provided by Carboline.

GATEWAY FOUNDATION



HENRY MOORE FOUNDATION

MTLEF



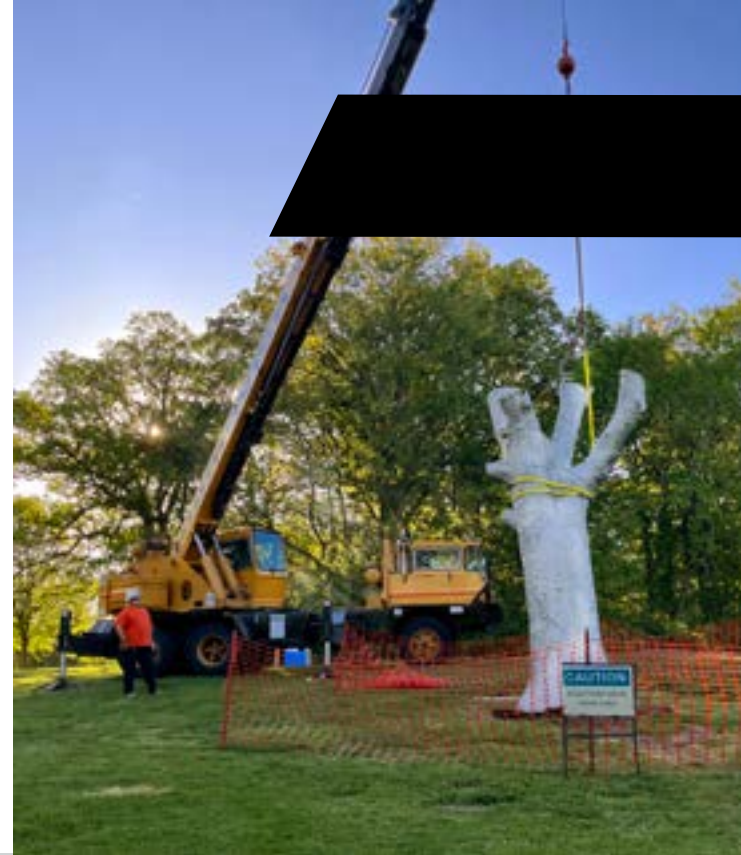


# SCULPTURE CONSERVATION

## Robert Lobe, *The Palm at the End of the Parking Lot*

After a year-long absence, Robert Lobe's *The Palm at the End of the Parking Lot*, 1995/2023 has been re-installed in Laumeier's South Lawn. Lobe created the work in 1995 by hammering aluminum sheets to wrap around the remaining trunk of a dead walnut tree. Over the following decades, the internal tree stump and underground root system decayed, putting the artwork in danger of toppling over. The artist designed and built a new steel structure to replace the organic material at the sculpture's core. He was onsite at Laumeier for almost two weeks to swap the stump for the new construction and reinstall the work with the close assistance of our curatorial team. The new and improved version retains the same shape and form based on the tree's contours but is built for long-term stability.

Special thanks to Budrovich, Ferraris and Frontenac Engineering all of which were key to a successful conservation and reinstallation of *The Palm at the End of the Parking Lot*.



## HAVE YOU SEEN...

The new hotel in the former Downtown St. Louis YMCA? In August of this year, 21c Museum Hotels brought new life to the Renaissance Revival-style YMCA building. The property boasts over 14,000 square feet of museum exhibition space featuring rotating, curated exhibitions.

21c Museum Hotel St. Louis is a supporter of our Visiting Artist in Residence program, providing our visiting artists with a fabulous place to stay. In addition, 21c will host talks and programs by the Visiting Artists at the hotel.

Our 2023 Visiting Artists in Residence, Lenka Clayton and Phillip Andrew Lewis were among the first guests at the the hotel - ever. They presented an artist talk about their work at Laumeier, *Twenty-Nine Tragedies*. (See page 12 for more.)



# A NEW PARTNERSHIP



**RIGHT:** Artist Robert Lobe was onsite for two weeks in April to oversee the reimagining of his original sculpture.

**LEFT:** Artist Tony Tasset visited in October to assess his sculpture, *Deer*, and discuss its forthcoming conservation.



## ROOM WITH A VIEW

Visit the hotel's outdoor amphitheater to find *View Finder*, an interactive sculpture by St. Louis-based artist and architect Chandler Ahrens. The sculpture was curated and produced in partnership with Laumeier Sculpture Park and Via Partnership. Through multiple viewing ports in the sculpture, visitors on the patio can watch reflected tableaux of the surrounding architecture and busy urban streetscape.

In October, the members of Laumeier's Board visited the hotel and had the opportunity to experience *View Finder*.





# EXHIBITIONS

**YAYOI KUSAMA / NARCISSUS GARDEN** Feb. 11-May 14, 2023

Curated by Dana Turkovic

This exhibition featured an historically important work by pioneering and internationally celebrated artist, Yayoi Kusama, and was the first large-scale, solo exhibition of Kusama's work in St. Louis. This exhibition was one of the most popular presented at the Park, attracting over 9,700 visitors.

*Narcissus Garden* is an immersive installation consisting of thousands of spheres with highly polished, reflective mirrored surfaces. Although it is composed of manufactured objects, the work is installed to suggest an organic garden, with meandering paths in and through the surrounding space. The artwork also playfully acknowledges and embraces the inherent narcissism in viewers' desires to see themselves reflected in the mirrored surfaces. The sculpture has a remarkable ability to simultaneously reflect its immediate surroundings while also suggesting the limitlessness of the universe.

*2023 Exhibitions are supported by Whitaker Foundation, Alison and John Ferring, Ken and Nancy Kranzberg, Joan and Mitchell Markow and Two Sisters Foundation, Emily Rauh Pulitzer and Mary Ann and Andy Srenco.*



FOR CAPTIONS ON ARTWORK: See page 17.

**VAUGHN DAVIS JR. / THE FABRIC OF OUR TIME** Aug. 26-Dec. 17, 2023

2023 Kranzberg Exhibition Series Artist

Curated by Dana Turkovic

A solo exhibition of work by St. Louis-based artist Vaughn Davis Jr. includes large-scale paintings, ceramic works, and an outdoor flag. The exhibition features a series of vibrant and expressive canvases that create organic, formless, shape-shifting objects, teetering between painting, performance, and sculpture. His brightly hued canvases, covered in drips and dynamic racing stripes were created through a performative and reactive approach that Davis refers to as "freestyle." Davis's work is timely and powerful, as his distress of materials refers to daily struggles and social protest, especially for Black and Brown communities. His exhibition challenges traditional definitions of sculpture and meditates on the passage of time and change.

Like his paintings, Davis' handmade flag, located in the Northern Grove, utilizes his process of expressive markings and deliberate deconstruction and reconstruction. Forgoing the more contemporary printing method, Davis chose to create a free-waving painting, entering into a direct collaboration with nature. This piece is meant to complicate some of the traditional functions of flags, such as group identity affirmation, nationalism, and morale building during conflict.

Davis is the 2023 Kranzberg Artist. This fund, generously provided by Ken and Nancy Kranzberg, supports the presentation of new work by one or more St. Louis area artists per year.

FOR CAPTIONS ON ARTWORK: See page 17.



# IN RESIDENCE

Laumeier's In Residence programs are designed to welcome artists, scholars, and thinkers to spend time at the Park, engaging with the community and forging connections between art, nature, and other fields.



## VISITING ARTISTS IN RESIDENCE

The Visiting Artist in Residence creates an opportunity for accomplished, foreign-born, U.S.-based artists to conduct research, meet St. Louis community members, and explore issues of importance to this region.

**LENKA CLAYTON + PHILLIP ANDREW LEWIS / TWENTY-NINE TRAGEDIES** Aug. 26–Dec. 17, 2023

Laumeier's 2023 Visiting Artists in Residence are the Pittsburgh-based collaborative duo Lenka Clayton (b. United Kingdom) and Phillip Andrew Lewis. With playfulness and humor, this collaborative duo explore interconnectivity and tension within the human-nature relationship, often with a focus on the balance between the individual and the collective.

The colorful, tragi-comic kite-shaped aluminum sculptures in *Twenty-Nine Tragedies*, embedded into a lone poplar tree, highlight the amusement and creativity that kites symbolize and the sense of disappointment when they cease to function. The tangled web of color, shape and string literally represents the intersection between us and the natural world.

*Twenty-Nine Tragedies* also expresses the creative play and wonder of kites, toying with the delicate balance between control and chance. Clayton and Lewis' vibrant installation imparts a tongue-in-cheek look at the irony of kites being both propelled and obstructed by Mother Nature.

Lenka Clayton and Phillip Andrew Lewis and the Visiting Artist in Residence Program are supported by Whitaker Foundation and Windgate Foundation. The Visiting Artist in Residence Program is sponsored by 21c Museum Hotel St. Louis.

Supported by



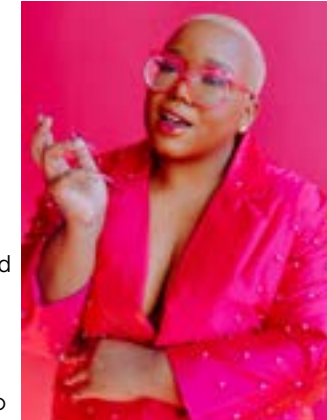
WHITAKER  
FOUNDATION



## CULTURAL THINKER IN RESIDENCE

The Cultural Thinker in Residence program launched in 2012. It appoints an individual to engage with Laumeier's programming over the course of one year. This person typically has expertise in a field outside of art to engage in interdisciplinary thinking and learning.

**AK Brown**, The Fashion Connector, is a St. Louis-based fashion innovator who uses her platform to educate her audience through services, insight, and connections. As a nine-year industry professional, Brown has grown her following around her expertise in blogging, styling, product development, public relations, business, and brand development. For Laumeier, Brown created digital content utilizing her active social media presence to help connect Laumeier's exhibitions and special events to a wide range of St. Louis residents.



## COMMUNITY ARTISTS IN RESIDENCE

The Community Artists in Residence program provides opportunities for local artists to engage with the community through workshops, events, and discussions.

**Emily Hemeyer**, a teaching and community artist with a career spanning twenty years, holds a passion for arts integration in education through events, classes and conversations rooted in citizen science, resilience skills and sustainability. Throughout her career, Hemeyer has worked with numerous organizations and individuals of all ages. Her current community arts project, The Wild Seed Field Museum, serves as a catalyst for a wide array of activities and programming with partnerships throughout the region.



Hemeyer coordinated the Laumeier Biodiversity Project through iNaturalist, to engage visitors with the natural environment, hosted a night hike for all ages, and participated in *Laumeier After Dark*.

**Lindsay Pichaske** is an artist and educator. She received her M.F.A. from the University of Colorado, Boulder and her B.F.A. from the University of North Carolina, Chapel Hill. Her work is exhibited throughout the country, including Jane Hartsook Gallery at Greenwich House Pottery in New York City, SOFA Chicago, and Flashpoint Gallery in Washington, DC, and is represented by Duane Reed Gallery in St. Louis. She had a solo exhibit at Duane Reed Gallery and an exhibit at the Fuller Craft Museum. She currently teaches ceramics at St. Louis Community College, Meramec.

Pichaske participated in *Discover Laumeier* engaging visitors in a collaborative clay project, hosted a *Makers Night*, and provided a *Sunday Tour*.





# EDUCATION

Laumeier offers a range of education programs to engage participants of all ages in art and nature.

Community partners and talented artists/educators share their expertise and talents through conversations, tours, one-day workshops and multi-week classes. Monthly *Family Workshops* feature different media and the very popular *Night Out* workshops encourage adults to try their hand at artmaking in a relaxed environment. In 2023, we held twelve sessions of our multi-week *Clay Classes* for ages seven and up.



## NATURE, HEALTH + WELLNESS PROGRAMS

This year we continued visitor favorites and added several programs: Sunday tours, focusing on art and the flora and fauna of Laumeier; *Mindfulness and Mud*; night hikes and stargazing, and we hosted *Conversations* about growing and foraging herbs. We also continued our partnership with Citra Fitness and Movement by hosting monthly yoga programs and encouraged visitors to search, pause, reflect, and practice mindfulness techniques through our *Mindful Reminders* throughout the Park.



*Discover Laumeier* invited visitors to make artwork alongside exhibition and community artists and to make and fly kites with the Gateway Kite Club.



## SUMMER ART PROGRAMS

From *Little Buds*, to *K-8 Art Camps*, to *Teen Art Programs*, Laumeier hosts youth of all ages for summer arts activities that bridge art and nature. We held eight weeks of half-day camps for ages 4-6 and full-day camps for grades K-8.

We hosted four two-week sessions of our *Teen Art Program*, designed for ninth through twelfth graders to develop artistic skills and knowledge through hands-on projects and mentorship. The *Teen Art Program* culminates in an art show, giving the young artists the chance to display their work inside the Aronson Fine Arts Center.

Thank you to the 18 special guests and visiting artists who joined us this summer. And thanks to generous donors, we provided tuition assistance to 100% of qualified applicants.

Summer camp is supported in part by Cardinals Care. Scholarships are supported by the Windgate Foundation and Blueprint4.



## LITTLE BUDS

This fall we welcomed our three- to six-year-old *Little Buds* back to the Park for a fun eight-week session of art making, trail and creek exploration, and plenty of play and investigation. The program culminated in a family art walk and party celebrating the season and the work of the young artists.





# EDUCATION

## OPENING MINDS THROUGH ART

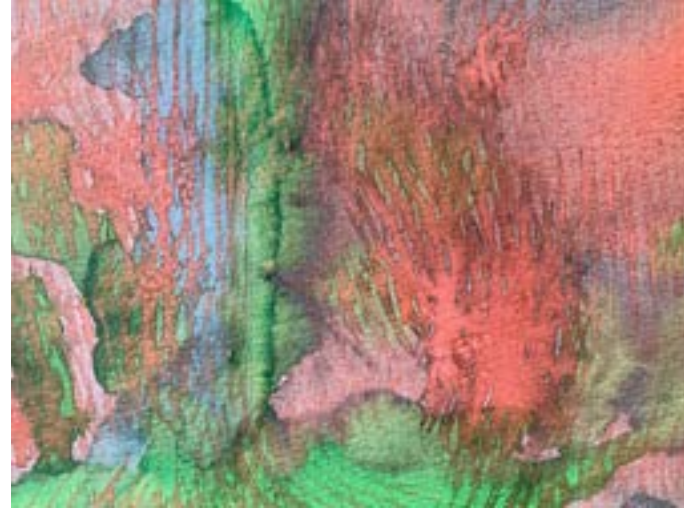
*Opening Minds Through Art (OMA)* is an award-winning, research-based art program for people living with dementia, developed at the Scripps Gerontology Center at Miami University, Ohio. Intergenerational partnership is a cornerstone of the program, pairing each elder with a volunteer, usually a college student seeking a career in healthcare. The volunteer provides guidance and support during ten weekly art-making sessions, and the program concludes with a culminating art show.

In 2023, we facilitated two OMA cycles, one with Delmar Gardens West and the other with Laclede Groves, which engaged a combined 18 artists living with dementia and 18 Maryville University undergraduate students.

*"I loved being able to help bring joy to the people around me, and help add to their quality of life. To me, the most important aspect of OMA was to bring joy to my art partner in this program, which in turn brought me much happiness and gratitude. Knowing that this program made my partner happy, and that I contributed to her happiness, made me overjoyed and thankful to be a part of it. I learned a great deal from OMA and my art partner."*

-Marissa, a Pre-Occupational Therapy, Rehabilitation Services, and Deaf Studies student at Maryville University

*Opening Minds Through Art* is supported by The Ann and Hank Bauer Fund for Senior Arts Programs.



## STEAM AT LAUMEIER

In 2023, we hosted over 400 students from four schools that met the criteria for our free *STEAM at Laumeier* learning experience for fourth grade students.

These unique, full-day experiences get students out of the classroom and into a naturally creative environment, sparking their imagination and helping them become more innovative, multi-disciplinary thinkers. Led by Laumeier's education team, students explore and examine selected contemporary sculptures; are guided through activities that help them learn how to creatively approach science, technology, arts, engineering, and math challenges; and participate in a hands-on project. Seen below are students designing, building, and measuring their own monochromatic sculptures with repeating geometric shapes.

We also had the opportunity to reach over 150 additional students by bringing *STEAM at Laumeier* into the classrooms of various schools in the fall. Students explored 360-degree images of the Park's collection and created their own colorful sculptures to take home.

Created in partnership with Maryville University's STEM faculty, the *STEAM at Laumeier* curriculum is designed to support learning objectives that meet both Missouri and national learning standards.

*"On behalf of the Bel-Nor fourth grade staff, students, and the PrinciPAL, thank you, thank you, thank you for the AWESOME Laumeier STEAM Sculpture experience! The scholars and teachers were highly engaged and super excited during the presentation and project! Kudos to you and your team at Laumeier for bringing this outstanding engineering, art, and geometric math concepts with sculpting to our school community. We are forever grateful."*  
-Bronita Walker, Librarian, Bel-Nor Elementary

*STEAM at Laumeier* is supported by the Saigh Foundation, the Trio Foundation of St. Louis, Windgate Foundation, and Cardinals Care.







# LAUMEIER ART FAIR MAY 12-14, 2023

The 36th Annual Art Fair featured nearly 150 juried artists from across the country, local food and beverage vendors, hands-on activities for kids, and live music all weekend long. More than 15,000 people joined us for this St. Louis tradition.



# LAUMEIER After Dark 2023



## THANK YOU TO OUR SPONSORS, MEDIA PARTNERS + IN-KIND DONORS




## LAUMEIER AFTER DARK / November 4, 2023

With the Park normally closing 30 minutes after sunset, *Laumeier After Dark* gives visitors a unique opportunity to experience the sculptures and explore the trails at night!

*Laumeier After Dark* featured temporary art and light installations by St. Louis artists Zlatko Ćosić, Boomer Gutknecht, Kevin Harris, Emily Heymeyer, Stephanie Keil, Jayson Lawshee, Ryan McCoy, and Hans Tursack. More than 8,000 visitors also enjoyed the Night Market featuring local makers; and some of St. Louis' best food and beverage vendors.

Sponsored by:

Entertainment sponsor:

In-kind support:



# 2024 EXHIBITIONS



## HUGH HAYDEN: *American Vernacular*

February 10–May 12, 2024

Organized by deCordova Sculpture Park and Museum in consultation with Laumeier, this exhibition will debut at Laumeier. Hayden’s first museum survey will explore a decade of his work in a variety of mediums, including newly commissioned works.

Hayden creates sculptures out of wood and other natural materials such as fur and feathers that become proxies for critical cultural issues. Growing up Black in the South, Hayden merges organic materials with built space, and draws on folk and fine art vocabularies to capture various aspects of his identity and lived experiences. Hayden’s artworks also engage with unseen threats of domestic life or the ideals and inequities of home/land ownership across racial lines in the U.S.

Hugh Hayden, *Good Hair 1*, 2021. Found oak church pews, red nylon epoxy. Loaned courtesy of Lisson Gallery.



## INGRID CALAME

August 24 - December 14, 2024

Los Angeles-based Ingrid Calame is known for her large-scale murals that trace the contours of residue and detritus left by people in various locales. She focuses her gaze on the often overlooked—such as spots on a sidewalk, graffiti on a riverbank or tread marks on a speedway. Using charcoal and translucent rice paper, Calame meets her material at the surface. Her process charts a map that evokes a representative, figurative image with a personal history, achieving something that a photo cannot, a tangible bond to the subject, an actual impression rather than a gaze.

Ingrid Calame, *Many/One* (installation First German United Methodist, Los Angeles), 2022. Graphite on rice paper. Courtesy of the artist, Los Angeles.

## 2024 VISITING ARTIST IN RESIDENCE



## MONIKA WEISS

August 24 - December 14, 2024

Weiss will present *Metamorphosis Nirbhaya*, a sculptural and sonic memorial dedicated to victims of gender-based violence perpetuated around the world. The outdoor installation will consist of metal towers containing hidden embedded speakers, installed along the Park’s wooded Nature Trail. The columns, standing like tree trunks, will project the work’s audio in unison every morning and evening for 30 minutes, marking the times of transition in the daily cycle.

Monika Weiss, digital rendering of *Metamorphosis Nirbhaya*, 2021. Mixed media. Courtesy of the artist.

## 2024 COMMUNITY THINKER IN RESIDENCE

Laumeier’s 2024 Community Thinker in Residence will be Gavin Kroeber, a curator, writer, and educator who works in the intersections of visual art, urban theory, public policy, and landscape. Kroeber will develop several programs to be held at the Park and offsite, all centered on the theme of suburban ecology and sustainability.



### CREDITS

**COVER:** Alexander Lieberman, *The Way*, 1972-80. Eighteen salvaged steel oil tanks. 780 x 1224 x 1200 inches. Laumeier Sculpture Park Collection, gift of Alvin J. Siteman and with funds from the National Endowment for the Arts.

**INSIDE COVER:** Photo of Lauren Ross by Chris Bauer Photography.

**PAGE 3:** Beverly Pepper, *Cromlech Glen*, 1985–90. Earth, sod, sandstone, trees. 252 x 1320 x 2288 inches (2/5 of an acre). Laumeier Sculpture Park Commission, with support from anonymous donors.

**PAGE 4:** Hypertiles image courtesy of Hypertiles.

**PAGE 5:** Gary Passanise, *Wisdom of the Limb*, 1995. Cast bronze. 16 x 13 feet. Gift of the artist.

**PAGE 6:** (Lower left) *The Way* dedication, June 7, 1980 (archive photo.)

**PAGE 7:** (Upper right) Photo courtesy of Laurie Skrivan/St Louis Post-Dispatch / Polaris.

**PAGE 8:** Robert Lobe, *The Palm at the End of the Parking Lot*, 1995/2023. Annealed hammered aluminum, stainless steel. 204 x 96 x 84 inches (126-inch circumference). Laumeier Sculpture Park Commission, with funds from the Mark Twain Laumeier Endowment Fund.

Tony Tasset, *Deer*, 2015. Fiberglass, steel, paint. 12 x 20 x 8 feet. Laumeier Sculpture Park Collection.

**PAGE 9:** Chandler Ahrens, *View Finder*, 2023.

**PAGE 10:** Yayoi Kusama, *Narcissus Garden*, 1966/2019. Stainless steel spheres. Collection of Lauren and Derek Goodman. Installation view, 2023. Artwork © YAYOI KUSAMA. Photo: Wil Driscoll Photography.

**PAGE 11:** Vaughn Davis Jr., *Horizontal, A Moment for Contemplation*, 2023. Unprimed canvas, acrylic, dye, pigment, aerosol. 103 x 34 inches. Courtesy of the artist, St. Louis.

Vaughn Davis Jr., *Orange Yellow Square*, 2023. Unprimed canvas, acrylic, dye, pigment, aerosol. 85 x 75 inches. Photo: Wil Driscoll Photography

Vaughn Davis Jr., *Remnants of What Was*, 2023. Nylon flag, paint. Courtesy of the artist, St. Louis.

**PAGE 12:** Lenka Clayton and Phillip Andrew Lewis, *Twenty-Nine Tragedies*, 2023. Courtesy of the artists, Pittsburgh and Catharine Clark Gallery, San Francisco.

(Lower left) Justin Barr, STL from Above.

**PAGE 13:** (Lower right) Justin Barr, STL from Above.

**PAGE 15:** Niki de Saint Phalle, *Ricardo Cat*, 1999. Urethane skin on steel, ceramic tile, stained glass, mirrors, stones in epoxy grout, silicone grout. 108 x 88 x 100 inches. Laumeier Sculpture Park Commission, with funds from the Sidney Cohen Purchase Fund, Nancy Singer, Commerce Bank and the Horowitz Foundation.

**PAGE 18:** *Annual Art Fair* photos by Chris Bauer Photography.

**PAGE 19:** *Laumeier After Dark* photos by Miranda Munguia.

(Lower left) Boomer Gutknecht, *Cubescape Luminosity*, 2023. Media projection.

(Upper right) Ryan McCoy, *Ethereal Encounter*, 2023. Media projection.

**PAGE 21:** Photo of Gavin Kroeber by Aaron Owens.

**BACK COVER:** Vito Acconci, *Face of the Earth #3 (detail)*, 1988. Natural concrete, gravel, reinforced rods, sod, earth. 58 x 394 x 342 inches. Laumeier Sculpture Park Collection, gift of the artist.

**PHOTOS BY LAUMEIER STAFF UNLESS OTHERWISE NOTED.**



## LAUMEIER SCULPTURE PARK

12580 Rott Road / St. Louis, MO 63127

314.615.5278 [www.laumeier.org](http://www.laumeier.org)



Laumeier Sculpture Park's ongoing operations and programs are generously supported by St. Louis County Parks; with support from the Regional Arts Commission; Missouri Arts Council, a state agency; among other corporations, foundations, individual donors and members.



**LAUMEIER SCULPTURE PARK** / Engaging the community through art and nature.

## SAVE THESE 2024 DATES!

### 37<sup>th</sup> ANNUAL ART FAIR

May 10-12

### THE BIG DINNER

September 21 - *Now every other year!*

### LAUMEIER AFTER DARK

November 2

